

User Manual



Green Energy User Manual

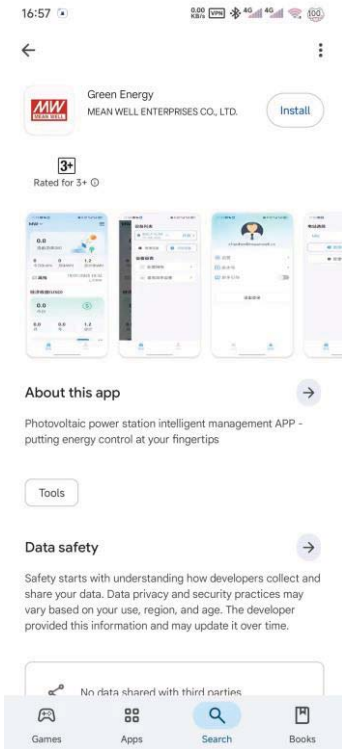
Table of Contents

1. APP SUMMARY	1
1-1. APP DOWNLOAD	1
1-2. CONTENT INTRODUCTION.....	1
2. REGISTER AND LOGIN.....	2
2-1. FUNCTIONAL DESCRIPTION.....	2
3. APP FUNCTIONAL MODULES.....	3
3-1. ADD POWER PLANT	4
3-1-1. Power Plant Management	4
3-2. ADD DEVICE.....	5
3-3. OVERVIEW.....	7
3-3-1. Power Plant Details	7
3-3-2. Device Details	7
3-3-3. Device Management	8
3-3-4. Device Settings	8
3-4. MY PROFILE	9
3-4-1. Language Settings	9
3-4-2. Modify Personal Information.....	9

1. APP Summary

1-1. APP Download

Application download: The Android system can download the app by searching for "Green Energy" on the Google Play Store or scanning the QR code in the specification document, while iOS users can download it from the Apple Store.



QR code download address:



1-2. Content Introduction

Overview:

The Overview page provides a quick summary of equipment data statistics and real-time monitoring of conversion status, allowing you to view equipment conditions, total power generation data, and operational status from a broader perspective. This facilitates improved power generation efficiency and more effective data analysis.

Data:

Data Monitoring helps users effectively track equipment performance in real time, enabling collaborative management and maintenance. It also allows access to historical operational information of the equipment.

Alerts:

The Alerts function assists users in real-time monitoring of equipment, supporting collaborative management and maintenance. It also provides visibility into historical operational data of the equipment.

Profile:

In the app, the "Profile" section enables users to view personal account information and manage basic details. Through the online feedback and user manual modules, it helps resolve user inquiries during operation, making it easier to understand and master the app's features.

2. Register And Login

2-1. Functional Description

Please enter username: Enter your username. Usernames are not case-sensitive.

Please enter password: Enter your password.

Register: Click the [Register] button to navigate to the registration page. Complete the required information as prompted to finish creating your account.

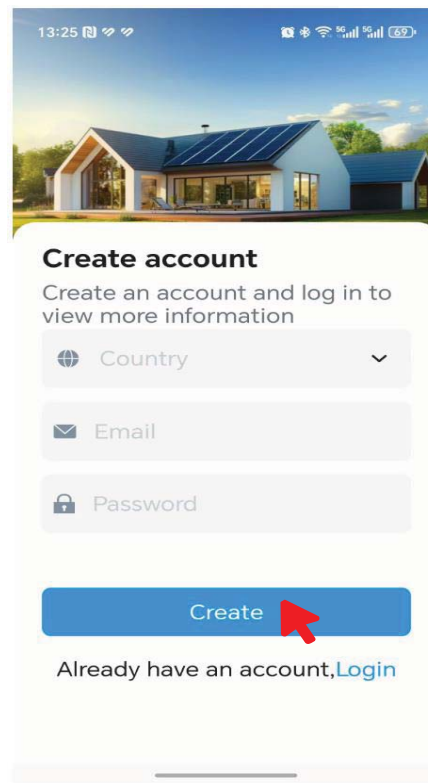
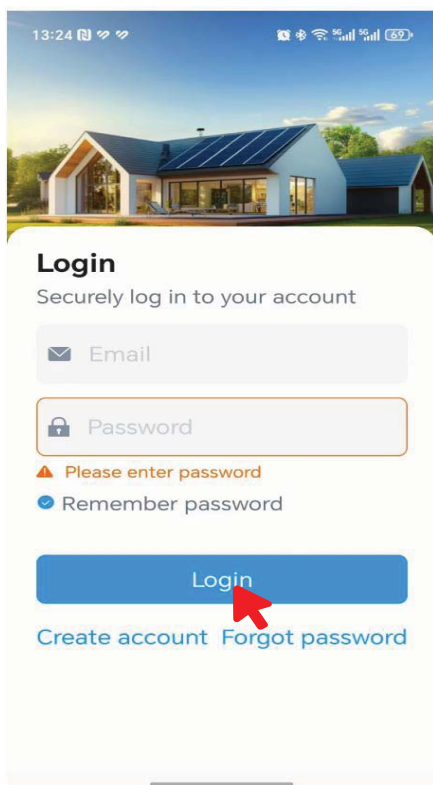
Input specifications are as follows:

Username: 6-30 characters. The first character cannot be a space. Only numbers, Chinese characters, letters, and underscores are allowed.

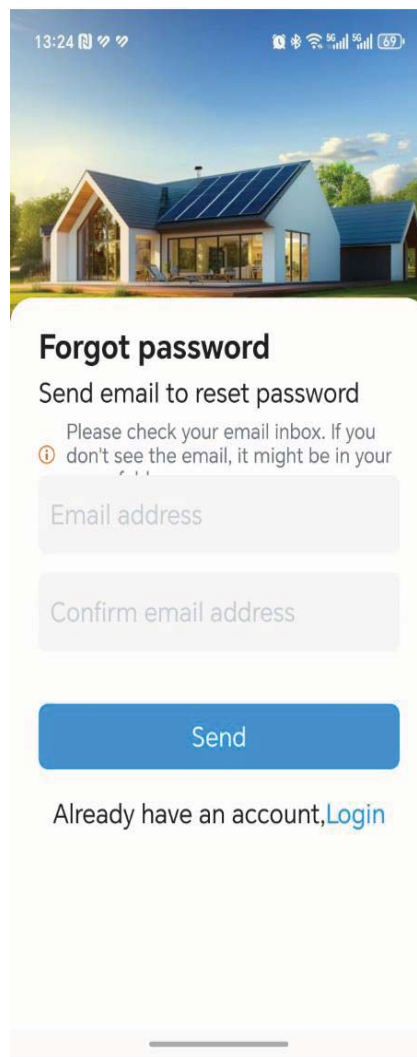
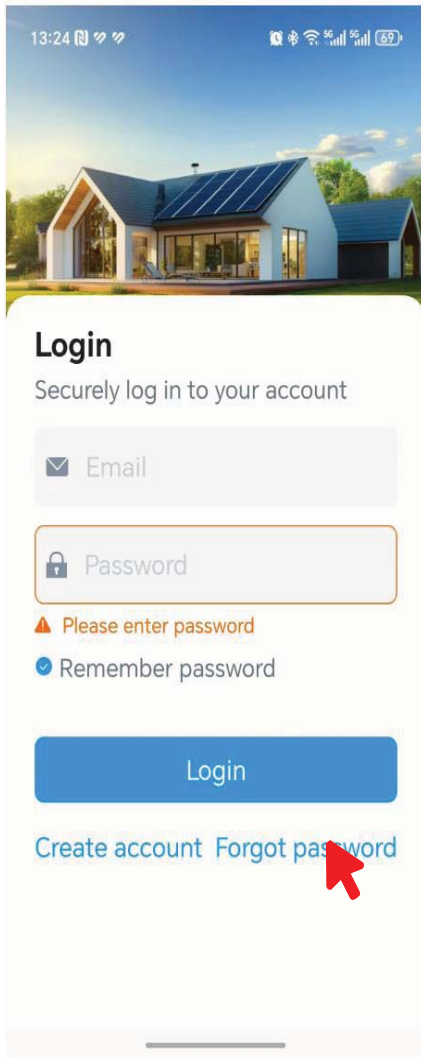
Password: 6-30 characters. Passwords are case-sensitive.

Phone number: Each phone number can only be registered to one account.

Email: Each email address can only be registered to one account.



Forgot Password: If you have forgotten your login password, click the "Forgot Password" button and follow the prompts to quickly reset it.



3. APP Functional modules

After logging into your registered account, the app's homepage is divided into three main sections:

Overview:

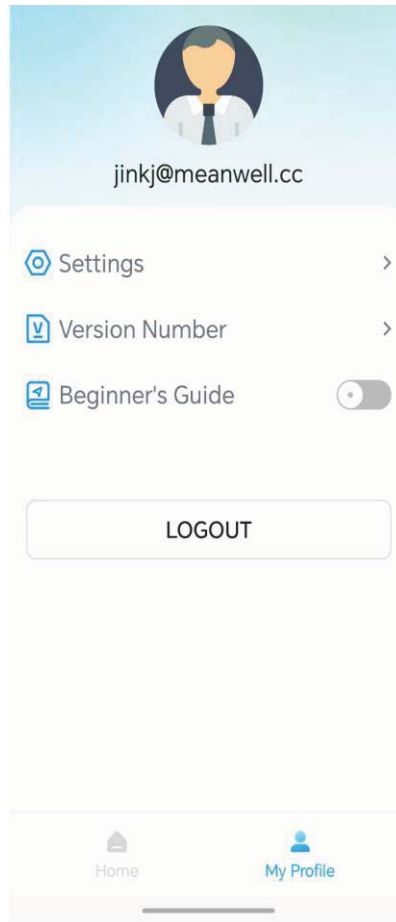
Displays power generation data for devices under the logged-in account. Users can choose to "View More Devices" or "Add New Device," and can also monitor the latest operational status of equipment through the energy flow diagram, enabling comprehensive monitoring and analysis.

Data:

Shows real-time data dashboards and historical data for the selected device. Users can choose to view "Data Analysis" or "Historical Data."

Profile:

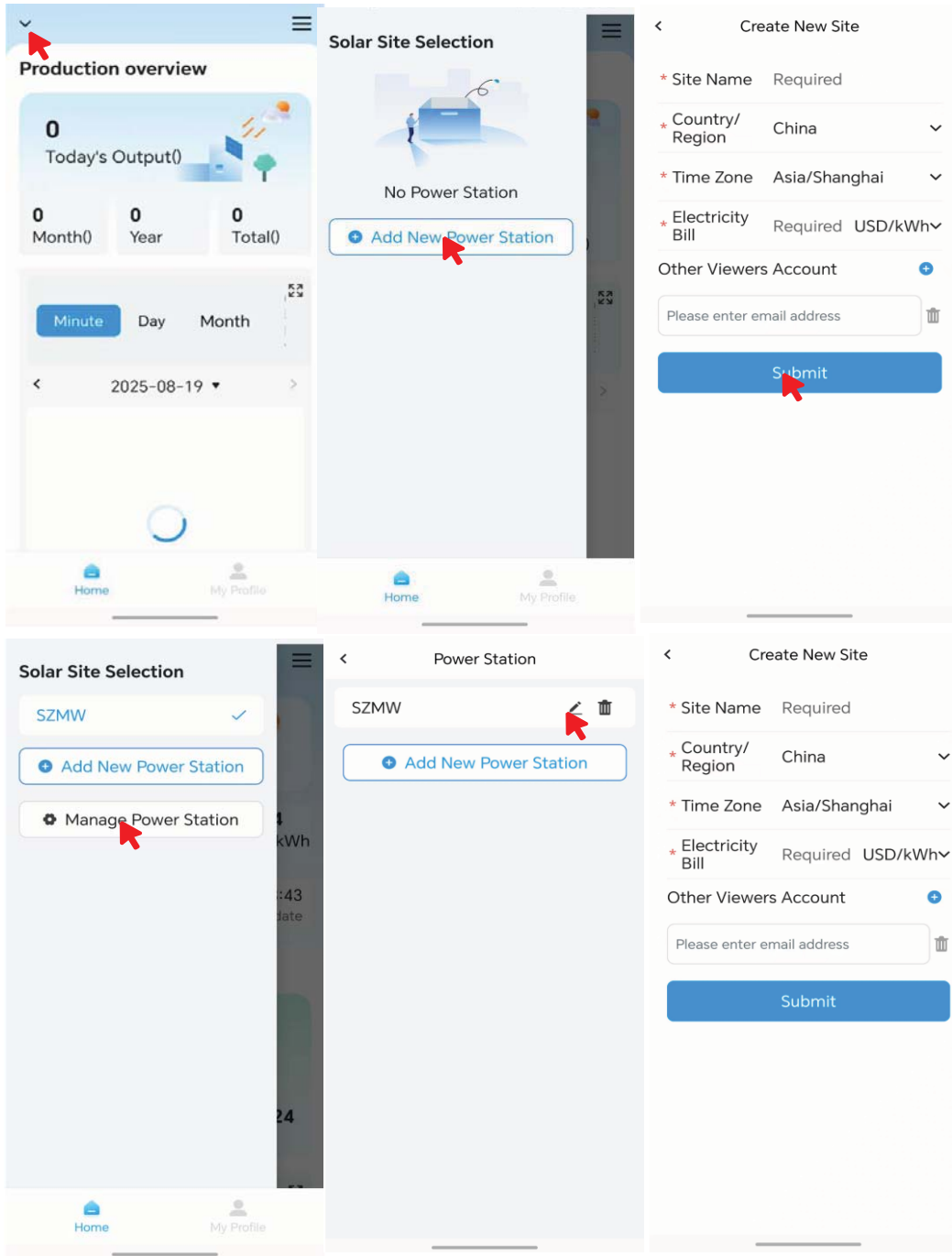
Allows users to change language preferences, modify account information, and access help documentation, product details, and company information.



3-1. Add Power Plant

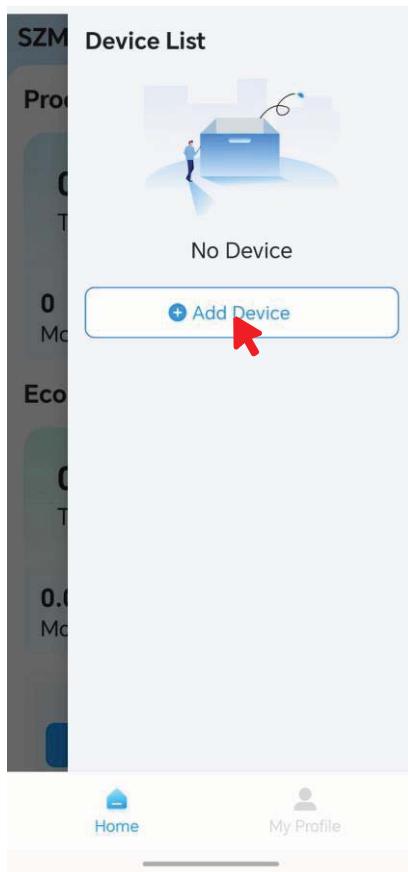
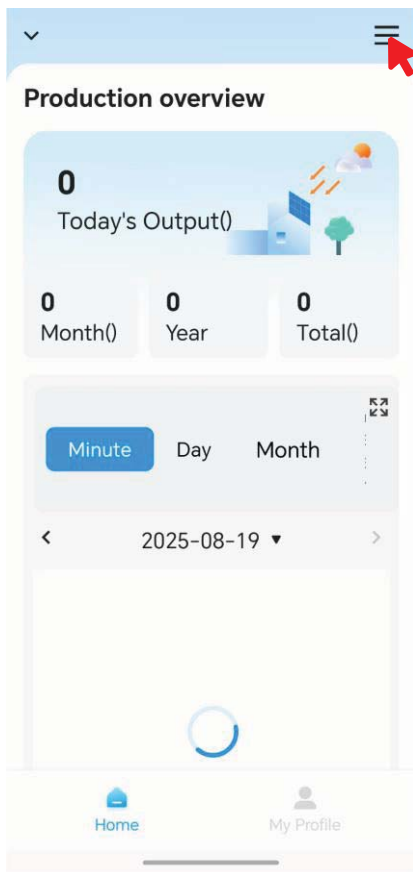
3-1-1. Power Plant Management

Click the "Add Power Plant" button to add a new power plant. You will be directed to the information, After filling in the required information and submitting it, you will be redirected to the homepage data view.

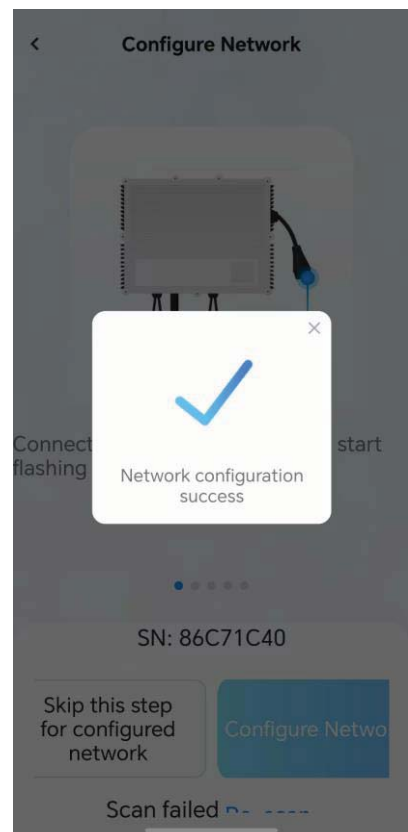
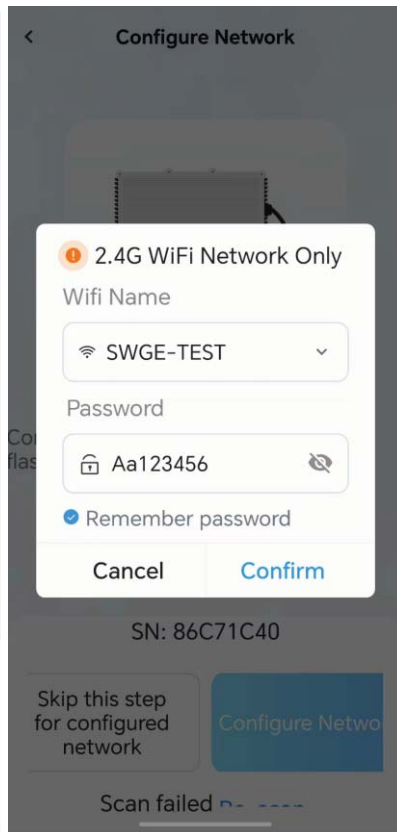


3-2. Add Device

On the Data page, tap the upper-right corner to view device information and tap the "Add Device" button. Then, scan the device barcode (or enter the code manually) to proceed.



Scan the device barcode to proceed to network configuration. Once configured successfully, the device will be added.



3-3. Overview

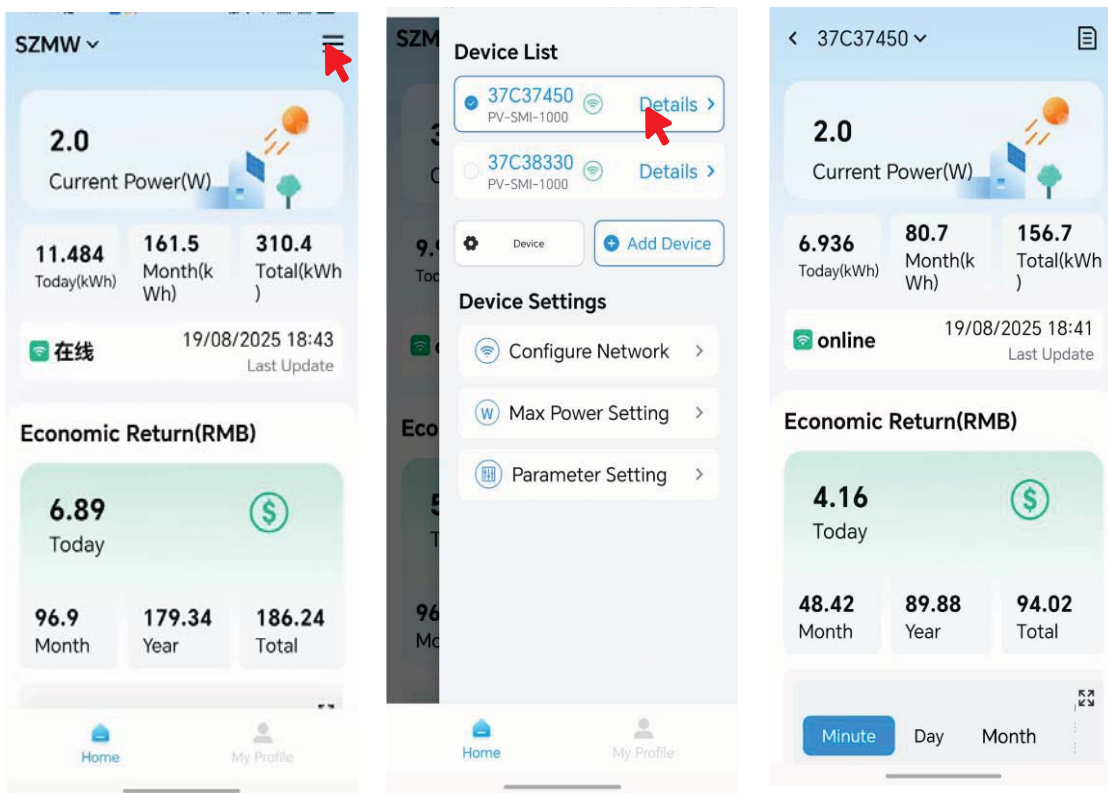
3-3-1. Power Plant Details

Tap the "power plant information" module to access its details and view the data summary of the equipment operation under that plant



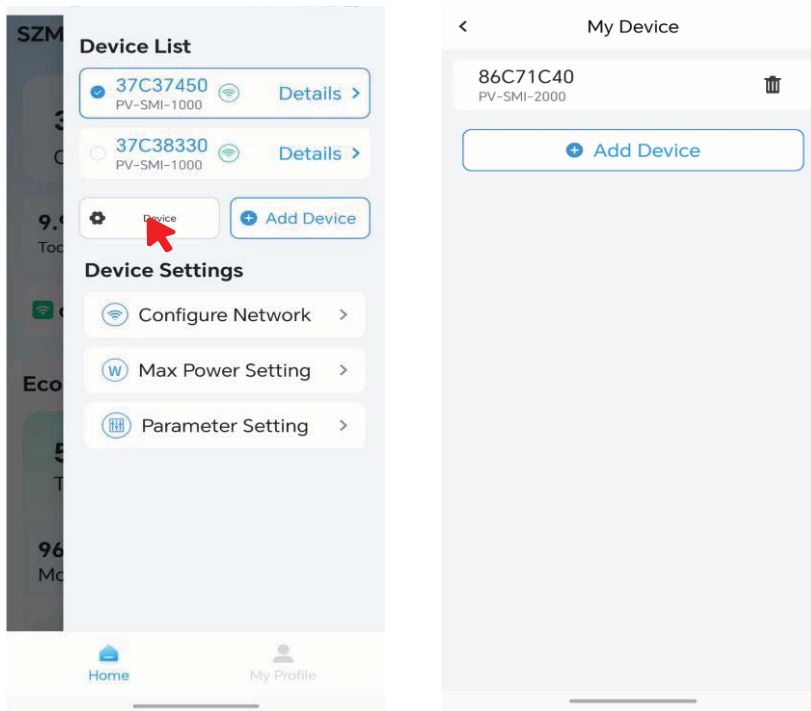
3-3-2. Device Details

In cases with multiple devices, tap the device list to view different device information. Tap [Details] to access the device information page.



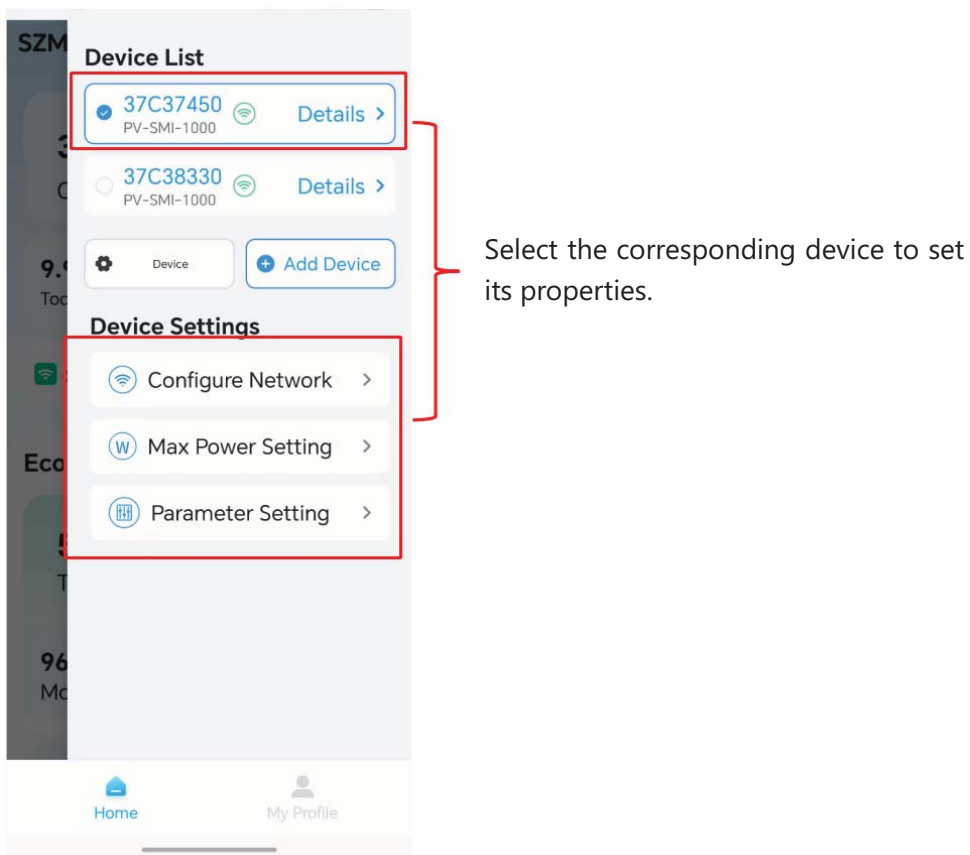
3-3-3. Device Management

Tap the **【Manage Devices】** button to add or remove devices under the power plant.



3-3-4. Device Settings

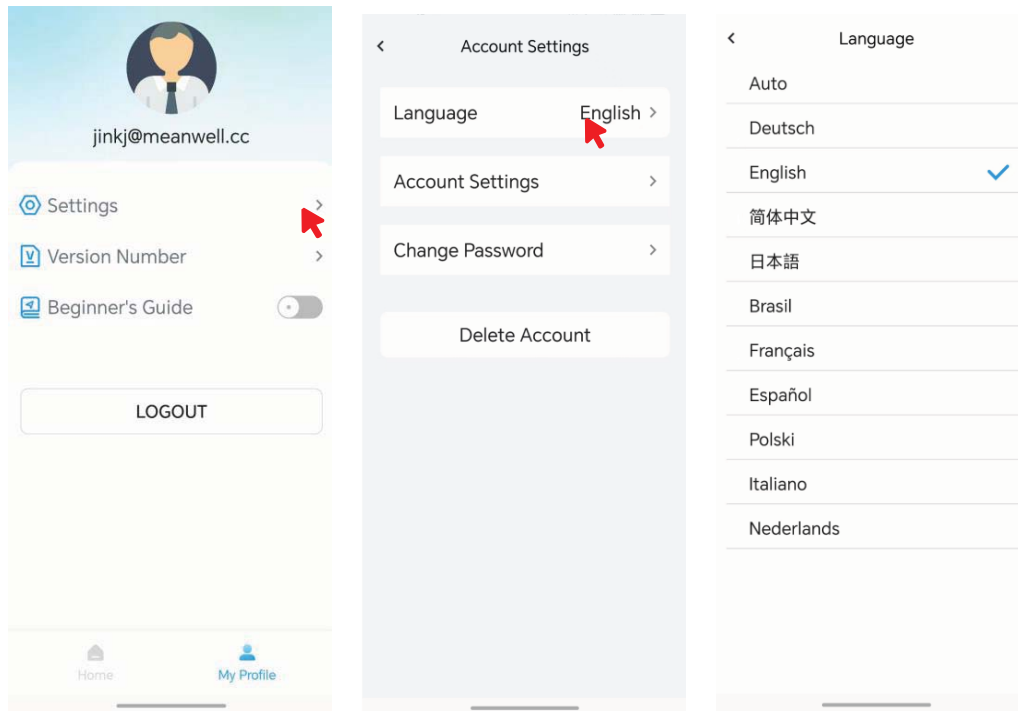
Select a device to configure its properties.



3-4. My Profile

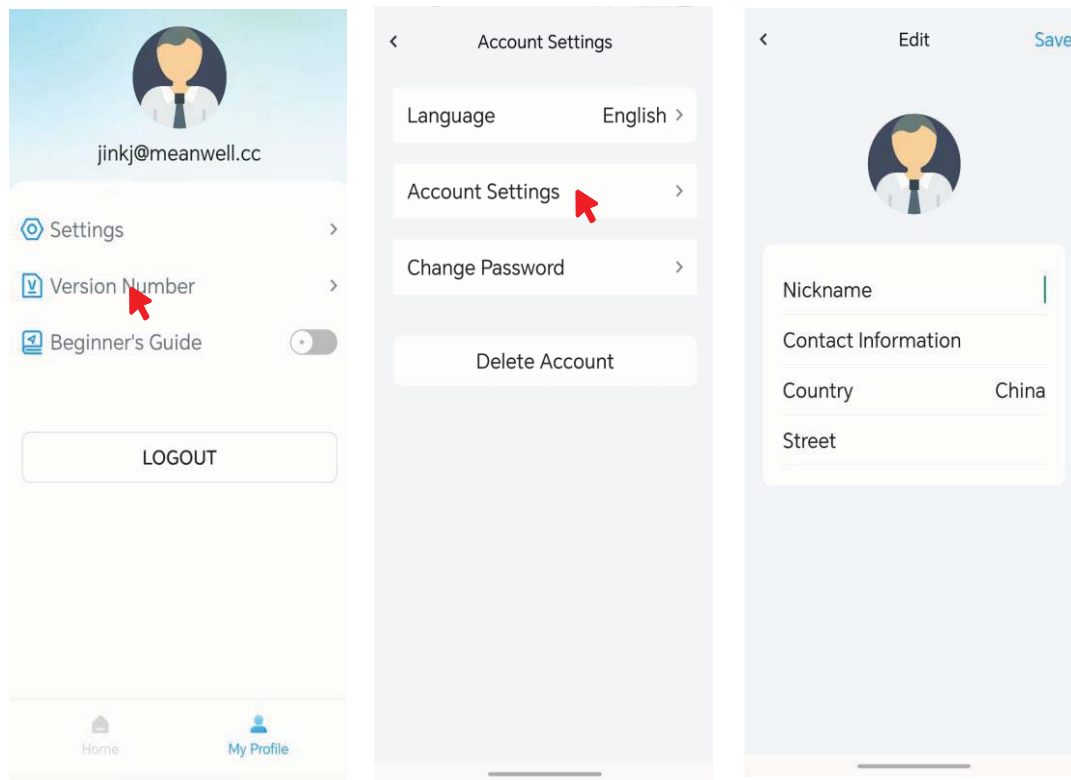
3-4-1. Language Settings

- 1) Tap the Profile page, then tap Settings to enter the Settings page.
- 2) On the Settings page, tap Account Settings.



3-4-2. Modify Personal Information

- 1) Tap the Profile page, then tap Settings to enter the Settings page.
- 2) On the Settings page, tap Account Settings.



目录

1. APP 概述.....	11
1-1. APP 下载.....	11
1-2. 内容介绍.....	11
2. 注册登录.....	12
2-1. 功能描述.....	12
3. APP 功能模块.....	13
3-1. 添加电站.....	13
3-1-1. 电站管理.....	13
3-2. 添加设备.....	14
3-3. 概览.....	16
3-3-1. 电站详情.....	16
3-3-2. 设备详情.....	16
3-3-3. 设备管理.....	17
3-3-4. 设备设置.....	18
3-4. 我的.....	18
3-4-1. 语言设置.....	18
3-4-2. 修改个人信息.....	19

1. APP 概述

1-1. APP 下载

应用下载:Android 系统可通过谷歌应用市场搜索“Green Energy”或扫描规格书二维码进行下载，而 IOS 系统可选择在 Apple Store 下载。



二维码下载地址:



1-2. 内容介绍

概览:

通过概览页，您可以快速获取设备数据汇总统计，实时监控设备的转化情况，方便您从更宏观的视角查看设备状态、发电总数据、设备工作状态等，从而有效促进发电效率提升和数据分析。

数据:

数据监控用于帮助用户对设备进行有效实时监控，实现对设备的协同管理及维护，并可查看到设备历史运行信息。

报警:

数据监控用于帮助用户对设备进行有效实时监控，实现对设备的协同管理及维护，并可查看到设备历史运行信息。

我的:

在 APP 应用中，支持用户通过“我的”板块查看账户个人信息，从而满足对基本信息的管理，通过在线反馈和操作手册模块来解决用户在使用过程的疑惑，便于了解及熟练使用 APP 应用功能操作。

2. 注册登录

2-1. 功能描述

请输入用户名:输入用户，用户名不区分大小写

请输入密码:输入密码

注册:点击【注册】按钮，可调转注册页面，按照提示完善信息，完成账号注册。

输入规范如下:

用户名:6~30位，首位不能为空格，只允许输入数字、中文、字母、下划线；

密码:6~30位，区分大小写；

手机号:一个手机号码只允许注册一个账号；

邮箱:一个邮箱只允许注册一个账号。



忘记密码:当出现忘记登录密码的情况时，可点击“忘记密码”按钮，按照提示快速完成密码找回。



3. APP 功能模块

注册账户后登录，APP 主页分为三大板块

概览:

根据登录的帐号展示帐号下设备发电情况的相关数据，可支持选择查看“更多设备”和“添加新设备”，也可以通过设备能流图掌握设备目前最新工作状态满足对设备的全局监控及分析。

数据:

数据是根据查看的设备展示该设备的实时数据看板和历史数据，可支持选择查看“数据分析”和“历史数据” C

我的:

修改语言种类、修改账户信息等操作，展示帮助文档，产品、公司信息。

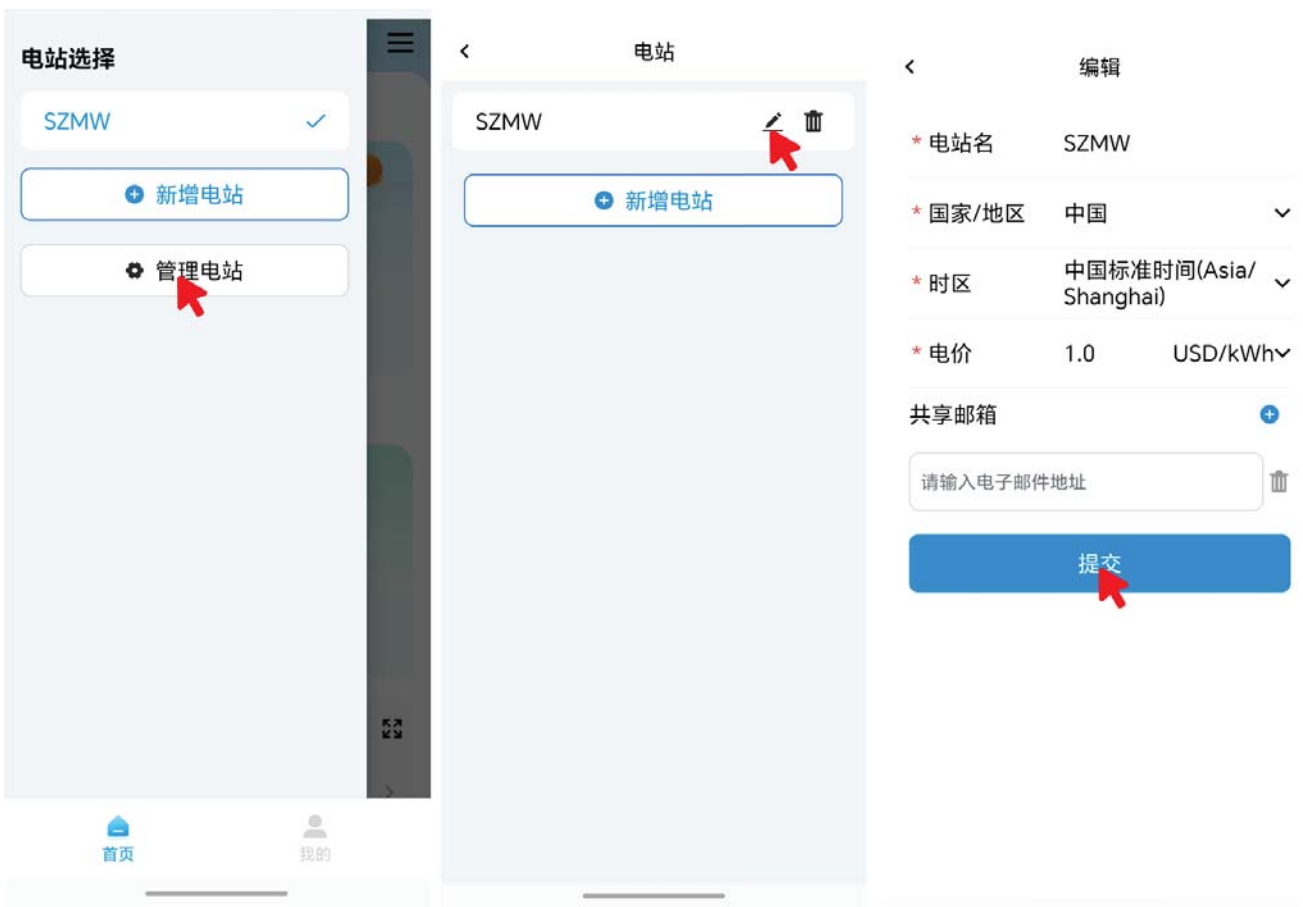


3-1. 添加电站

点击添加电站按钮添加电站，进入电站填写页，填写信息后提交，进入首页数据页面。

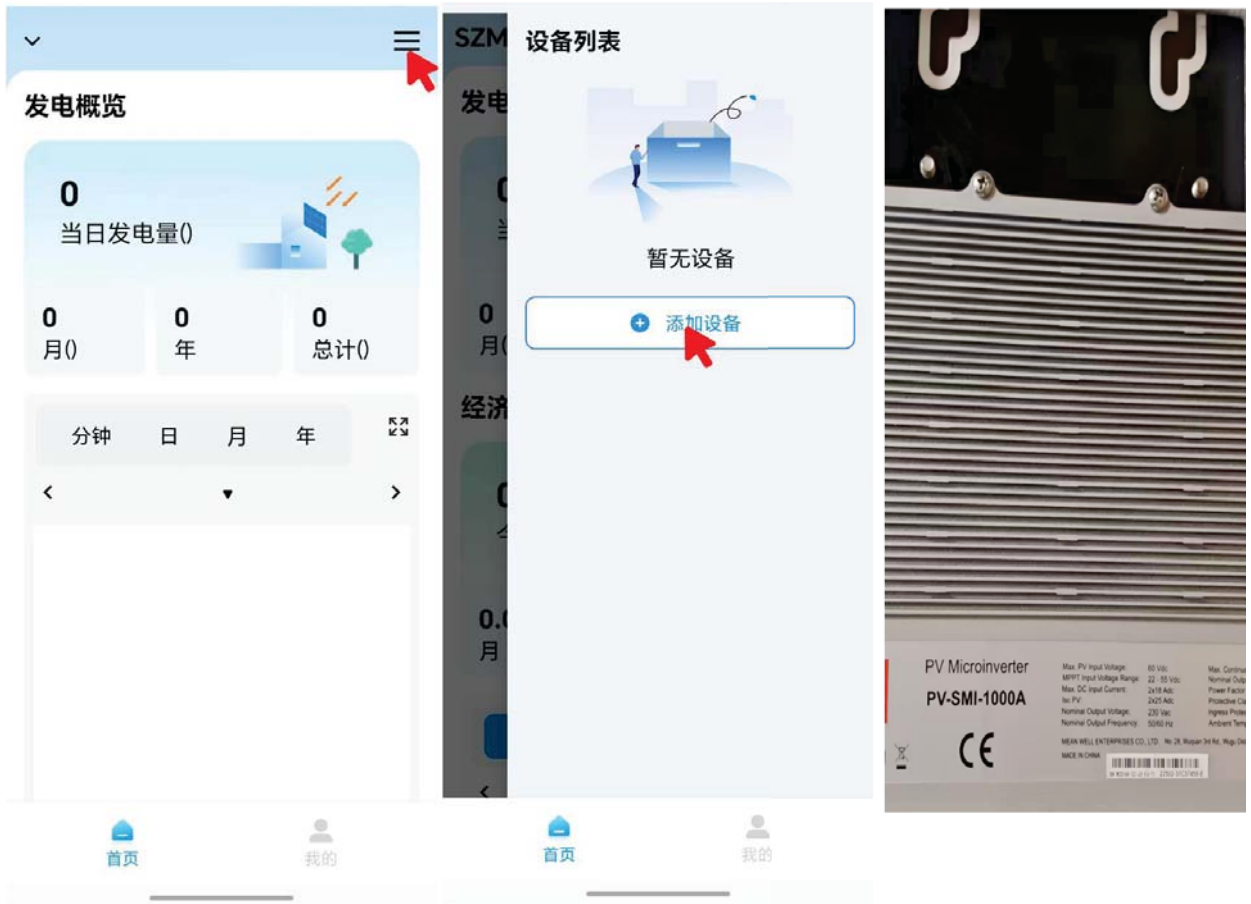
3-1-1. 电站管理

点击添加电站按钮添加电站，进入电站填写页，填写信息后提交，进入首页数据页面。



3-2. 添加设备

点击数据页右上角查看设备信息，点击新增设备按钮，进入扫描设备条形码



扫描设备条形码，进入设备配网，配网成功后，添加设备成功。



3-3. 概览

3-3-1. 电站详情

点击电站信息模块，进入电站信息产看该电站设备运作下得数据汇总



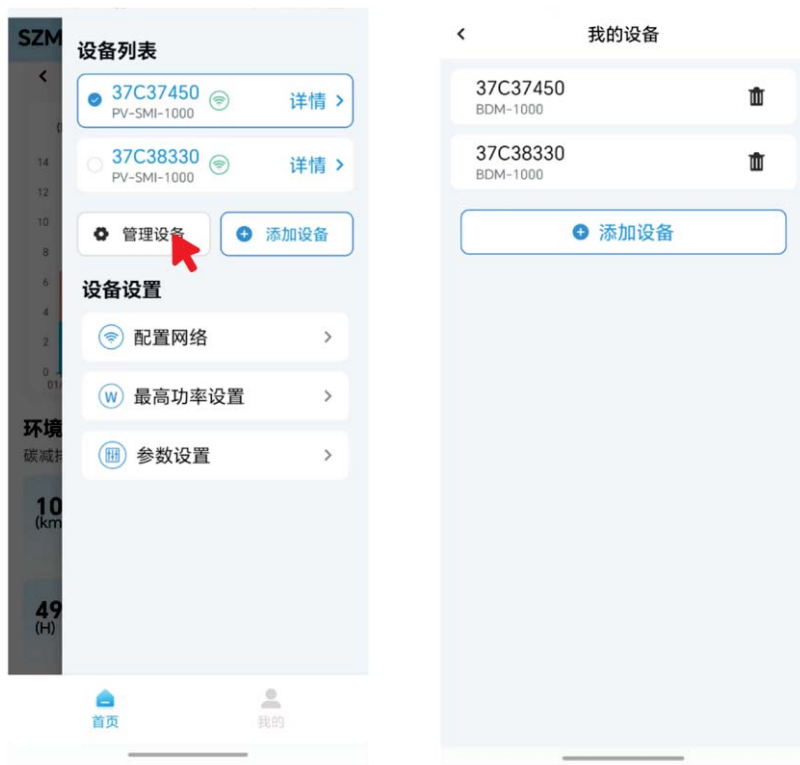
3-3-2. 设备详情

多个设备情况下可点击设备列表，查看不同设备信息点击【详情】，进入设备信息页面



3-3-3. 设备管理

点击【管理设备】按钮，可对电站下设备进场增加、删减。



3-3-4. 设备设置

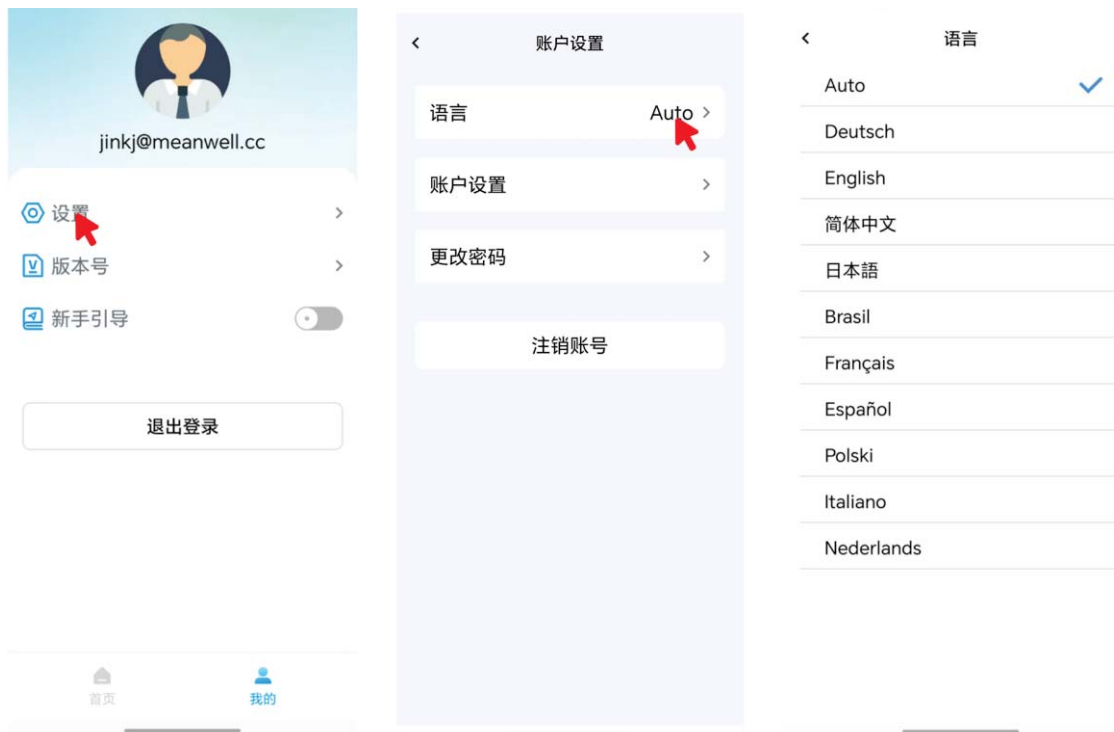
选择设备，对设备进行属性设置



3-4. 我的

3-4-1. 语言设置

1. 点击我的页面，点击设置进入设置页面。
2. 点击设置页面，点击账户设置页面。



3-4-2. 修改个人信息

1. 点击我的页面，点击设置进入设置页面。
2. 点击设置页面，点击账户设置页面。

